




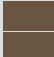




BANQUET ROOM INFORMATION

연회장 시설 안내

| Name of Room |  Banque Round |  theater Style |  classroom |  cocktail Reception |  U-shape |  Floor |
|------------------|--|--|---|--|---|---|
| CRYSTAL BALLROOM | 230 | 350 | 200 | 300 | 50 | Hotel 1F |
| BOARD ROOM | - | - | - | - | 13 | Hotel 2F |
| NAMSAN TERRACE | 150 | - | - | 200 | - | Hotel 3F |
| CELESTE | 120 | - | - | 150 | - | Hotel 3F |
| FESTA HALL | 100 | - | 100 | 150 | 35 | Festa 2F |

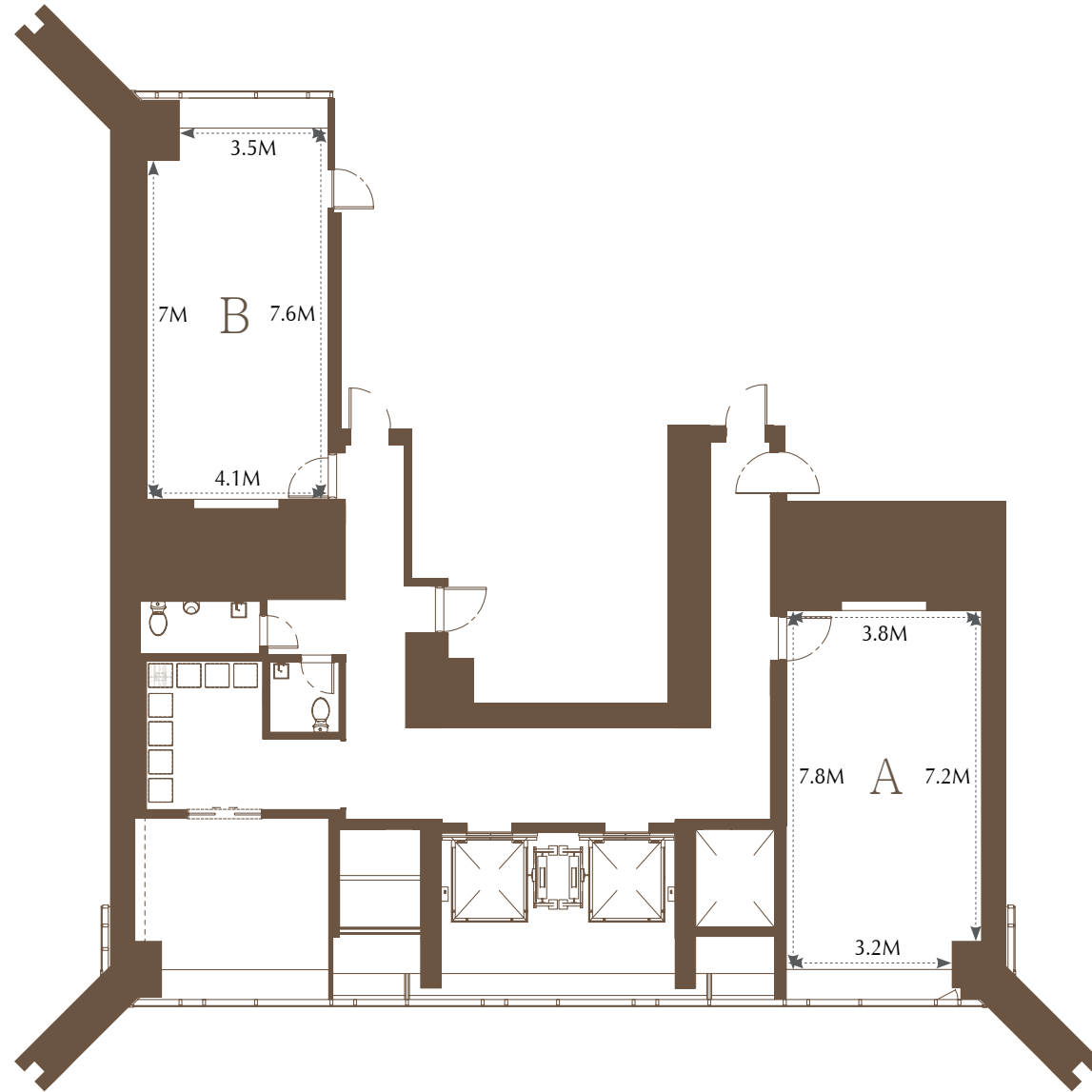
The Hotel - Crystal Ballroom 1F

| | | Crystal Ballroom | Crystal Ballroom I | Crystal Ballroom II |
|--------------------------|---------------|------------------|--------------------|---------------------|
| Space (Sq. meter) | | 490 | 250 | 160 |
| Height | | 3.4 ~ 3.9 M | | |
| Capacity | Banquet Round | 230 | 100 | 90 |
| | Classroom | 200 | 100 | 90 |
| | Reception | 300 | 200 | 100 |

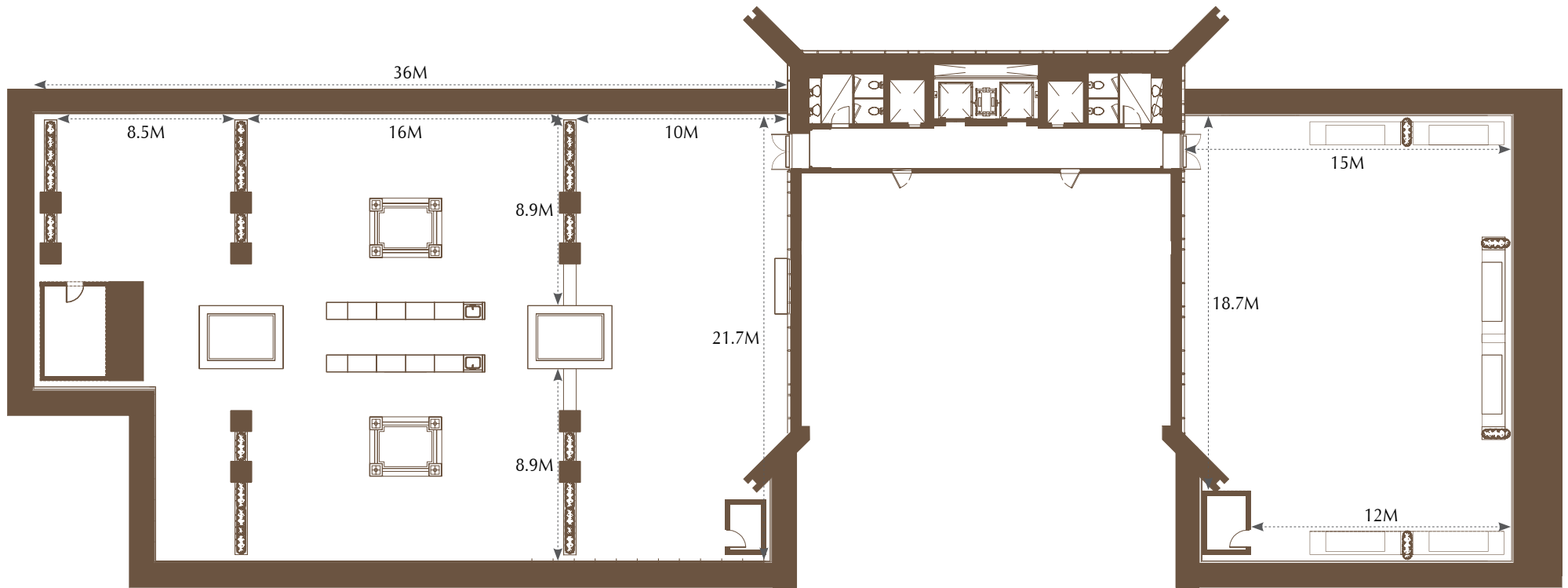


The Hotel - Boardroom 2F

| Space | A - 34 / B - 30 | Sq.meter |
|----------|-----------------|------------|
| Capacity | Boardroom A | 13 persons |
| | Boardroom B | 13 persons |

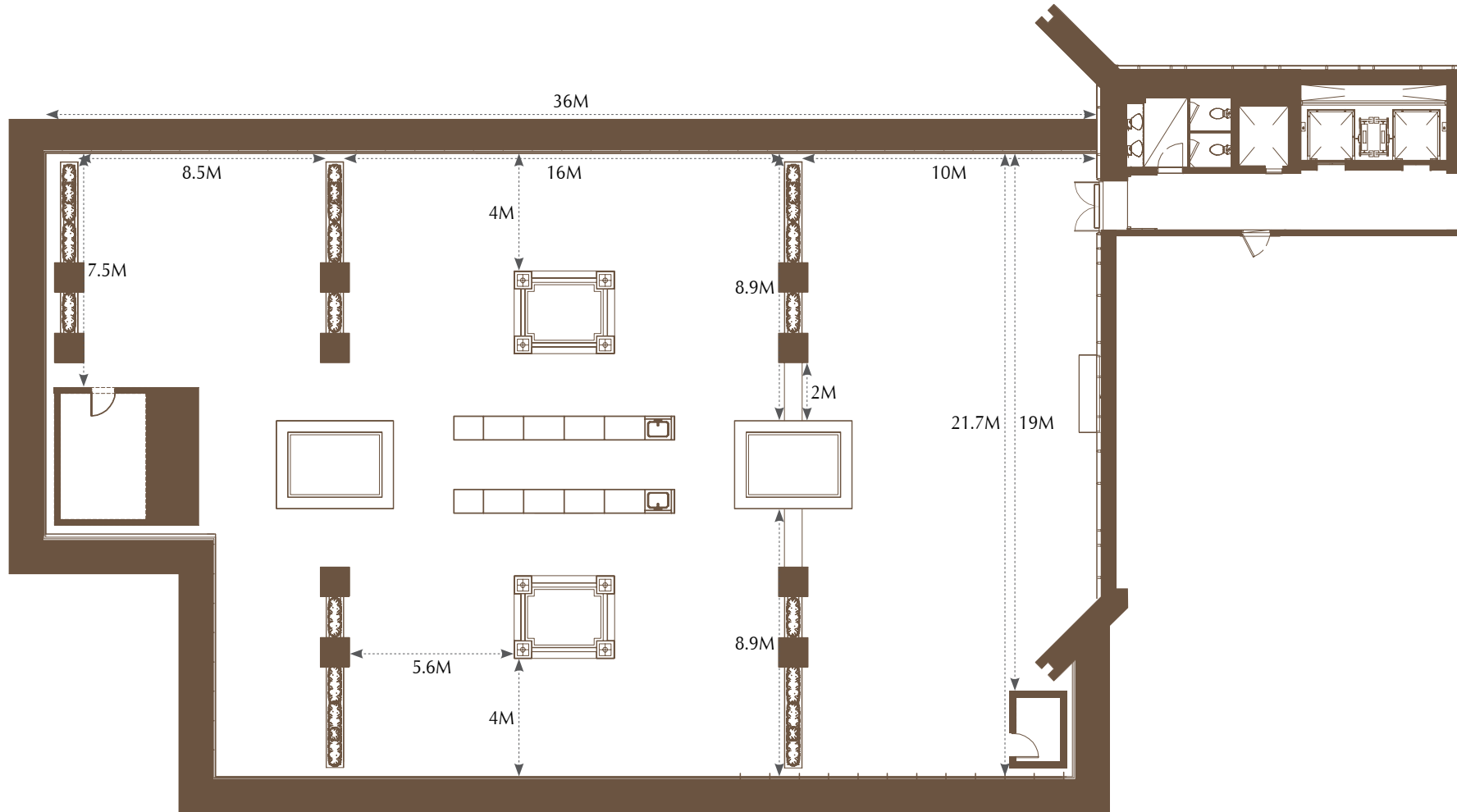


The Hotel 3F



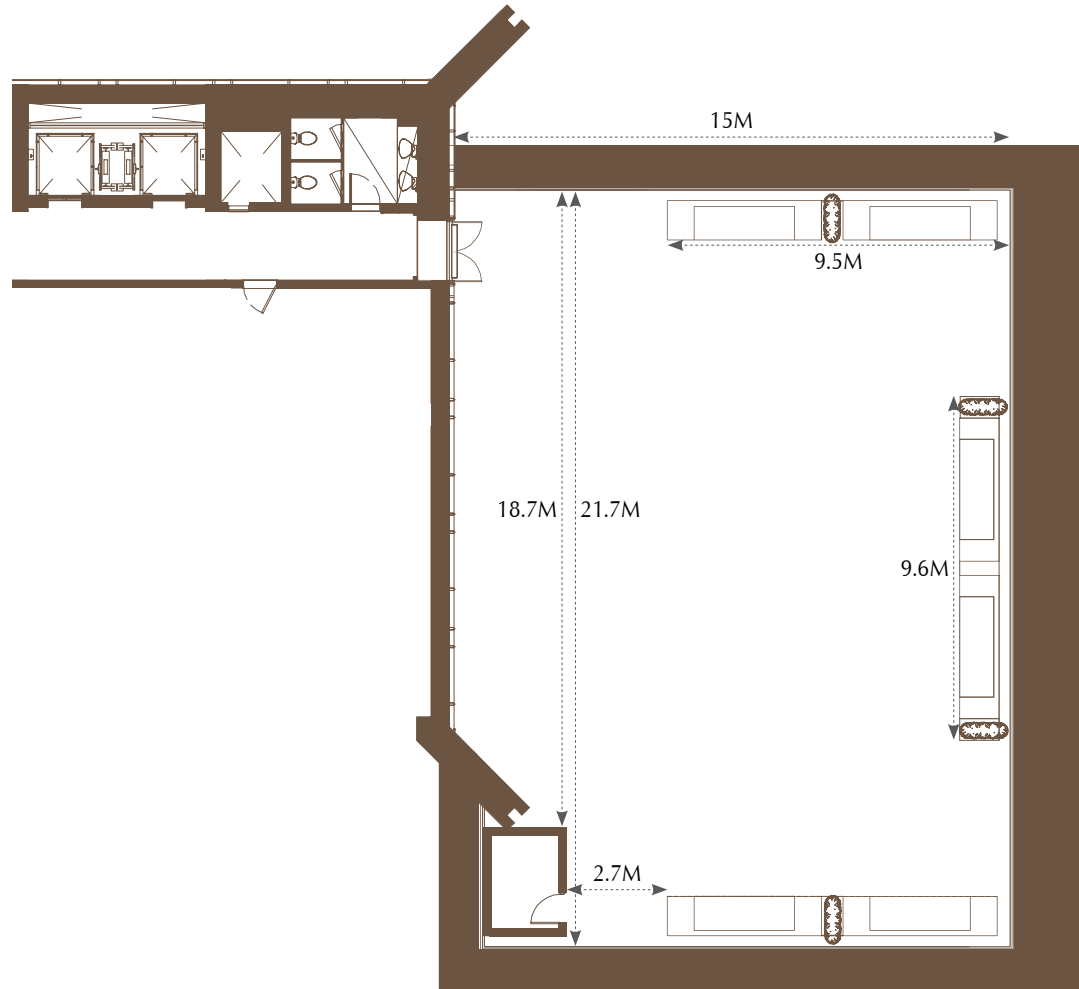
The Hotel - Namsan Terrace 3F

| Capacity | Banquet Round | Classroom | Reception |
|----------|---------------|-----------|-----------|
| | 150 | - | 200 |



The Hotel - Celeste 3F

| Capacity | Banquet Round | Classroom | Reception |
|----------|---------------|-----------|-----------|
| | 120 | - | 150 |



The Festa - FESTA HALL 2F

| | | | |
|----------|---------------|-----------|-----------|
| Height | 2.3 ~ 2.7 M | | |
| Capacity | Banquet Round | Classroom | Reception |
| | 100 | 80 | 180 |

